
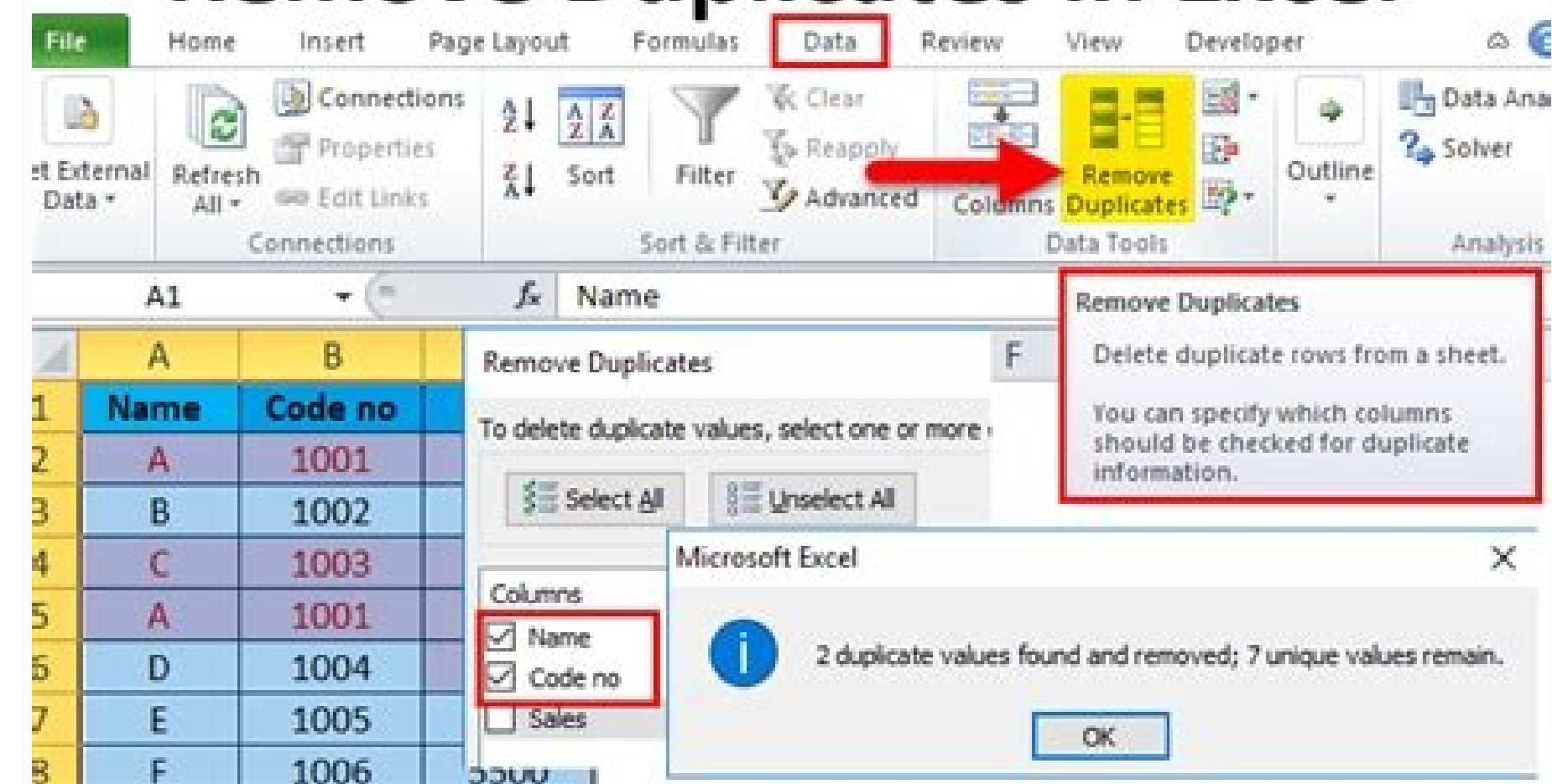


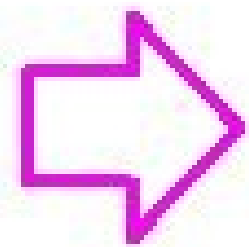
I'm not robot  reCAPTCHA

[Continue](#)

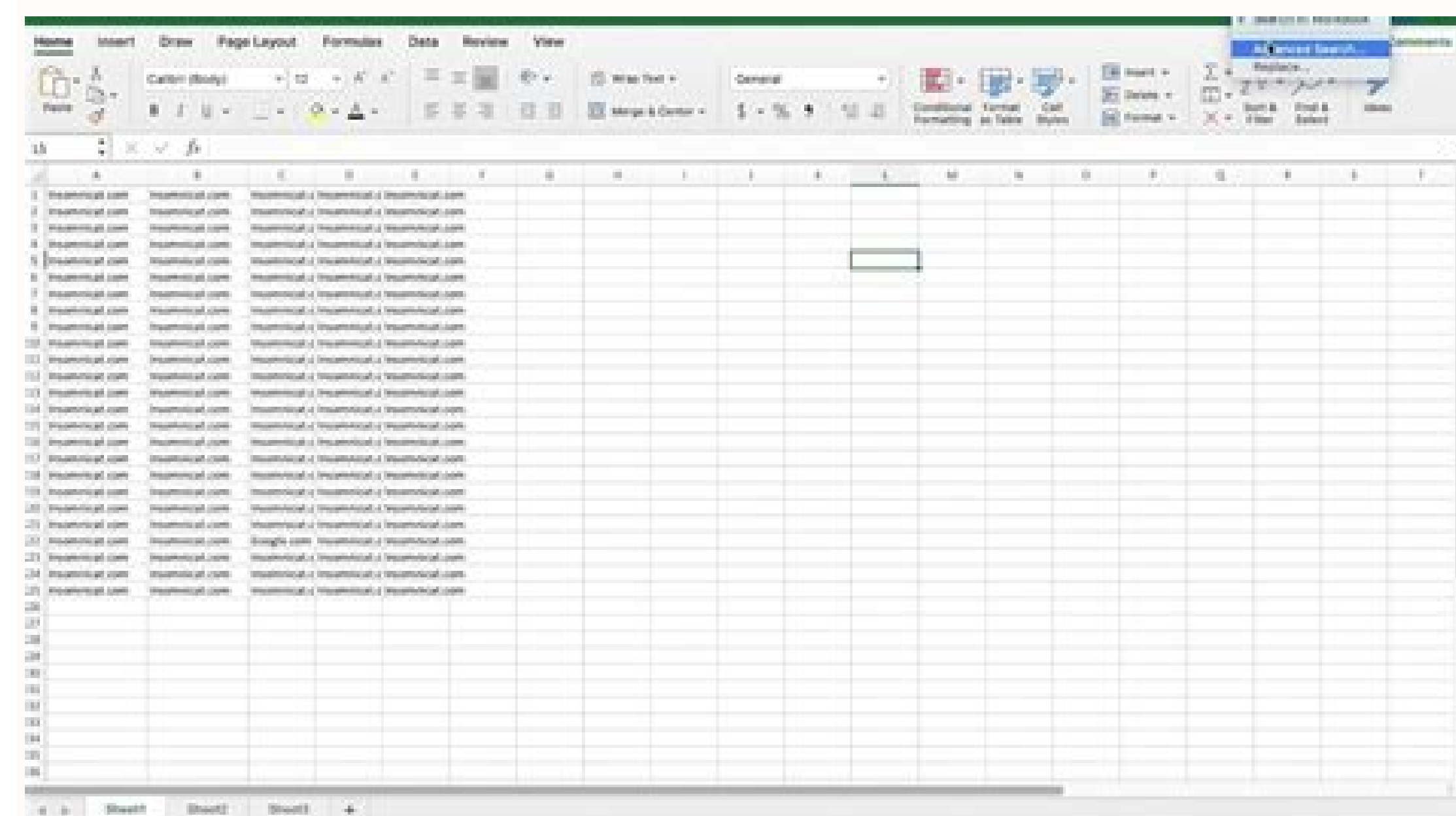
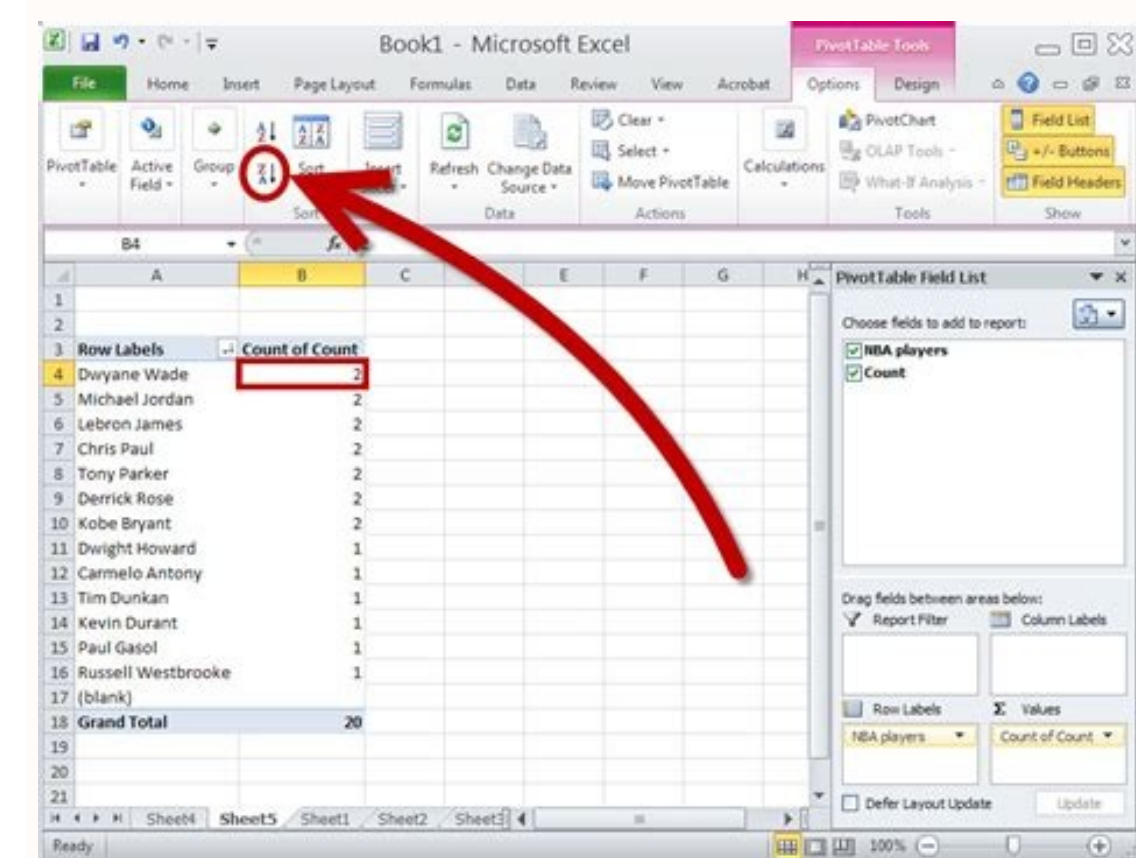
Remove Duplicates in Excel

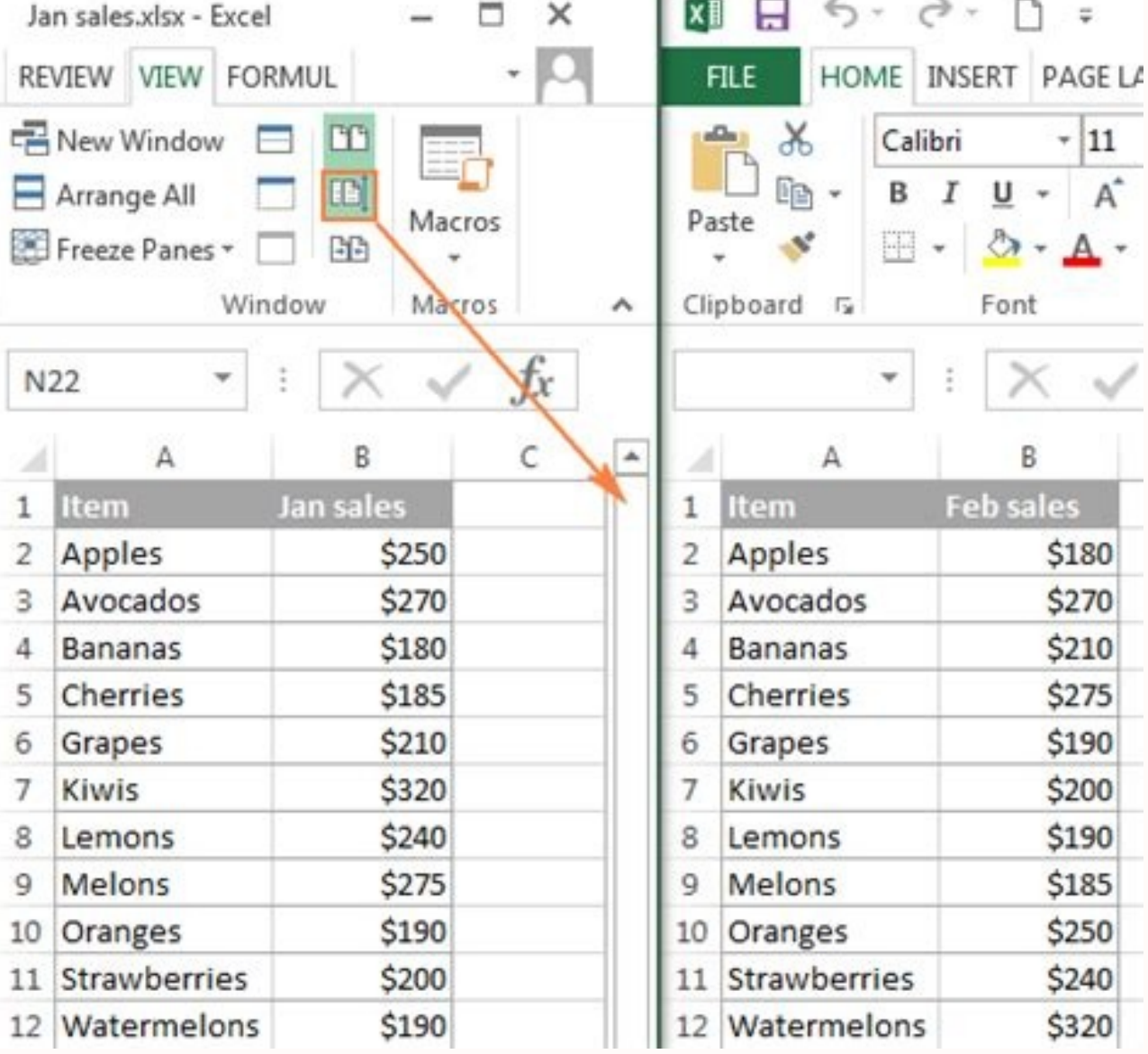


	A
1	Name
2	Lily
3	Lucy
4	Judy
5	Ted
6	Ryen
7	Frank
8	Amy
9	Lucy
10	Ted
11	Wenslide
12	Ryen
13	Georgy
14	Amy



	A
1	Name
2	Lily
3	Lucy
4	Judy
5	Ted
6	Ryen
7	Frank
8	Amy
9	Lucy
10	Ted
11	Wenslide
12	Ryen
13	Georgy
14	Amy





How to find duplicates on two different excel sheets. How to find duplicates in excel multiple sheets.

▲ ♦ * Step 1: ▲ € Á¼á¼ In sheet 1, select the range of cells for the order IDs again. In my video tutorial, my range is B2 to F1001 on the "Historical" sheet. Order ID matching the sheet1 will be highlighted with a specified color then. In the second conditional format rule, we have inserted a condition that looks for the count of more than 1. If the value found in cell B2 is also in our designated range in the historical tab, the countIF function returns a higher number than zero. And the ISNUMBER function verifies whether a value is a number or not. 3. If you have any questions or idea to what Long of those lines, I would love to hear them in the comments below. Once the rule is duplicated, select one of them and press the edition rule. If it is, it will return a value of the number of times they are found. The data. Press OK for the last time and finish. *â" Step 4: ▲ € Á¼á¼ Will find the Preview of the cell formatted with text in the new format rule dialog box. Click OK again. Therefore, the chemical required in the description box of the rule will be: = isnumber (Match (B5, Sheet2! \$ B \$ 5: \$ B \$ 14.0)) Get the following result that is in the Mé © all earlier. Then select the format boton and that will open the format cell window, where you can select any type of format you want. The VLOOKUP function searches for a value in the column more to the left of a table and then returns a value in the same row of the specified column. Skill level: Intermediate clock The tutorial clock on YouTube and subscribe to our channel Download the Excel file here are the files before and after the tutorial. Different format for duplicate multiple if you want to highlight in a different color, the entries that have more than a duplicate on the other sheet, you can simply A new rule. ▲ € Á¼á¼ Now select the edition rule and the Edition Format Rule window will appear. Applying the conditional format now that we have seen. seen. How the formula works, let's see how the conditional format is applied. Revise them: Conclusion As you can imagine, there are many uses and ways to expand this idea of comparing two sheets and using the conditional format to highlight those comparisons. In the Start Tape tab, choose the conditional format drop-down menu and select a new rule. Insert the ISNUMBER function to find duplicates in multiple worksheets in Excel we can also combine the functions of IsNumber and Match to find duplicates or matches on two Excel worksheets. ▲ € € œâ" Step 4: ▲ € Á¼á¼ Select a new and different color for the second format rule. Start by reopening the administrator of conditional format rules (tab at the beginning ▲ € conditional formato ▲ € € manage rules). If the function does not find a coincidence, it returns an error value. We are going to select the rule that we have already done and then press the edition rule. It highlights multiple duplicates in two worksheets now, suppose we have duplicate multiple for an order ID on the sheet2. A dialog box called conditional format rules manager will appear. For this process we are using the Countif function. Finally on sheet1, you will see the cells highlighted with the order IDs that are also present on sheet 2. Finally, the conditional format highlights the coincidences based on the "Solo" value. ▲ € Click to expand first let's see how to write the formula and then we will see how to apply the conditional format. Or you can consult our other articles related to Excel functions on this website. ▲ € Á¼á¼ Press OK. The range is the Cā Ğ Lulas group you want to search to find a specific value. As in the next screenshot, you will find cell B13 With another color, since this cell contains an order ID that is present several times on the sheet2. In our case, all the phone numbers are all. Phone The "Current" worksheet. Therefore, the application highlights the corresponding cells with another defined color. ▲ € Á¼á¼ Under the house of the house, select the new command of the conditional format drop -down rules. This is because when we apply the conditional format to our table, Excel will examine each cell individually to see if the criteria are applied, but only if expressed as a relative reference (without flashing symbols). You can do it using a conditional format and format. First, select the entire full range of cells you want the format to be applied. Apply the Vlookup function to highlight the duplicate rows in multiple working sheets now, we will insert the Vlookup function into the new format rule. The coincidence function seeks the coincidences of the request IDs of two work sheets and returns the row number of the corresponding order ID on sheet1. After configuring a new rule formula to find duplicates in multiple working sheets, we have to select the cell format with colors or text design. ▲ € Á¼á¼ Click on the Format Option. The Countif function looks for each order ID of the sheet1 on the sheet2 and returns the occurrence of each duplicate for the corresponding order ID. ▲ € € œâ" Step 2: ▲ € Á¼á¼ Click on the option ▲ € complicated rule ▲, ▲ € " €. Download the practice exercise book you can download the Excel book that we have used to prepare this article. It contains two columns that show some order ID to the left and the right shows the IDs that are in trmon. The required formula with the Vlookup function in the rules box will be: = Vlookup (B5, Sheet2! B5: C14, False) and the following image shows the highlighted cells where the application of the Vlookup function has returned vian outputs. Therefore, let's go for the following procedures now for With our objectives. Click to expand after pressing Apply, we see that our table now shows entries that have more than a duplicate in a different color: additional tutorials if yes I like to learn more about the use of conditional format. I think it will find these two ā ostle positions. 1. ISNUMBER function seeks only numerical values and ignores the error values found in the coincidence function. What are you a nice day! Change the source, the edge, the type of number or to the duplicates so that they stand out. i¼ã¼á¼ Under the start tape, choose the Command of Administration Rules of the Conditional Format Deflection. In the new format rules window, select the option that says you use a formula to determine what cells will format. ▲ € ¸"▲" Step 6: ▲ € Á¼á¼ In the DIALOGO of Conditional Format Rules Administrator, the second rule is embedded now. For example, the formula looks like this: = Condef (Historical ! \$ B \$ 2: \$ F \$ 1001, B2) It is important that the B2 used for the argument of the criteria is expressed as a relative reference, not an absolute reference. The argument of criteria is simply the value we are looking for. Therefore, the corresponding cells with the duplicated values in the selected cup leaf will be highlighted with the defined formats. The coincidence function returns the relative position of an element in an matrix that coincides with a specific value in A specific order. Final words I hope that all these simple ones mentioned above now help them apply them in their Excel cages when necessary. Now we will look SHEET2. Da works sheet called Sheet2, the other two columns find a list of the order IDs that have already been delivered to the left and the corresponding delivery of the right. Condef has two arguments. It will appear a dialog box called "New Format Rule". On sheet1, the corresponding order ID will be highlighted with another o Cell format. ▲ ♦ ▲ € œœnd how does this formula work in conditional format? When you press OK, and OK again, your format will be applied. Highlight duplicates in multiple worksheets.xlsx 3 3 Approaches to highlight duplicates in multiple worksheets in Excel to highlight duplicates or matches in multiple worksheets, we have to look for the conditional format option. ▲ € € œâ" Step 3: ▲ € Á¼á¼ In the Formula of the Rule Description, enable the edition and add ▲ € ā, → ▲" > 1 ā, → only at the end of the Formula I hope this is ā ostle for you. If you have any questions or comment, let me know in the comments section. ? In a nutshell: Learn how to compare two work sheets for duplicate values highlighting cells with conditional format. It also highlights the values in a different color when there are more duplicates. After finding the matches or duplicates, it can also highlight the corresponding cells with particular colors or with different text sources. Read more: How to highlight the duplicates in Excel 2. If it is not on that sheet, it will return a zero. Any cell that returns a value greater than zero will have the new applied format. ▲ € ¸" ▲ € œâ" Step 3: ▲ € € œâ" In the format cell window, select a color to highlight the duplicates. ▲ ¸ā € œâ" Step 2: ▲ € € œ¼á¼ of the rule type options, select " use a formula to determine inside the cells to format ". Then we can select the format to choose a different color. Use the Countif Fōmula The fōrmula that we will write will examine a cell to see if its content can be found in another range that we specify. In Microsoft Excel, when I have to look for duplicates or coincidental values in multiple worksheets, you will find many suitable phramulas to fulfill the objective. With the conditional format, we use those number to highlight the inputs that are duplicated. Compare-Sheets-with-conditional-formatting-before.xlsx Highlighting the duplicates between work sheets, let's say it has two excel work sheets that have overlapping and overlapping data He wants to draw attention to any cell that has duplicate entries. The first is the range and the second is criteria. That will open a field where you can write or paste the formula we are talking about earlier. ▲ ¸ā € œâ" Step 1: ▲ € € œ¼á¼ from the sheet1, select the range of cells where the duplicated values will be highlighted. In our example, that is cell B2. This will create a duplicate of your previously defined rule. When we enter this formula in the DESCRIPTION box of the Rule of the new Format Rules window, the conditioning of the conditional format will search the range cells specified on sheet 1 where the formula returns only the values not zero and, so Both, highlight the corresponding cells only. The only change that we will make to the rule is to add "> 1" until the end of the rule. Use the Countif function to highlight the coincidences in Excel working sheets, the following image represents a worksheet called the sheet1. In this article, you will find those methods to highlight duplicates in several sheets with suitable examples and illustrations. We have used the Countif here function to define the criteria to highlight the cells on sheet1. Therefore, the function returns true for numerical and false data for error values. values.